



ILE TABLE (INDOOR + OUTDOOR)

design Piero Lissoni

Table in different heights and sizes, with 10mm thick top, available for indoor and outdoor.

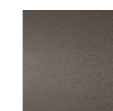
Indoor version: base in AISI 304 Stainless Steel square-section tube, with matt satin-finishing or steel with epoxy powder coating RAL-K7 9010 white, RAL-K7 9017 black, gunmetal grey colour or burnish colour. Top available in HPL, decorated on both sides, white or black colour, clear glass, back-painted black glass, back-painted white extra-clear glass, smoked grey glass or blue-tinted glass.

Outdoor version: base in AISI 316 Stainless Steel square-section tube, with matt satin-finishing or in AISI 316 Stainless Steel with epoxy powder coating RAL-K7 9010 white, RAL-K7 9017 black, gunmetal colour or burnish colour. Top available in HPL, decorated on both sides, white or black colour, clear glass, smoked grey glass or blue-tinted glass.

Structure



Stainless Steel
with Matt
Satin Finish
(In-Outdoor)



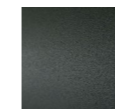
Burnished
Painted Steel
(In-Outdoor)



Painted Steel
RAL-K7 9017
Black
(In-Outdoor)

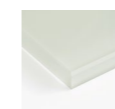


Painted Steel
RAL-K7 9010
White
(In-Outdoor)

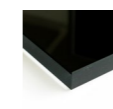


Steel with
Gunmetal Grey
Coating
(In-Outdoor)

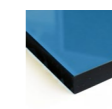
Top



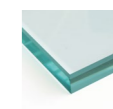
White
Painted Glass
(Indoor)



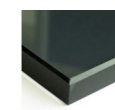
Black
Painted Glass
(Indoor)



Blue Colored
Glass
(In-Outdoor)



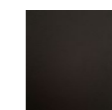
Transparent
Glass
(In-Outdoor)



Smoked Grey
Glass
(In-Outdoor)



White HPL
(In-Outdoor)



Black HPL
(In-Outdoor)

Technical Drawings

